



Wavy Platters

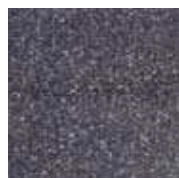
Our wavy platters have increased in popularity and are now one of our best selling ranges. Due to their success we have extended this range to include two new sizes.

They are elegant and practical and whilst maintaining the look of porcelain; they are extremely durable and lightweight.

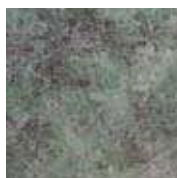
Our platters can be displayed within a counter or used to serve canapés. They are one of our most versatile products and are great for butchers' counters, bakers and delis. They are especially great for buffets.



Eggshell



Black Granite



Green Marble



Pink Marble



Black Melamine Wavy Platter

TB 905 420 x 295mm

TB 9053 300 x 210mm

★ TB 90500 420 x 240mm

★ TB 90525 250 x 250mm

★ TB 90585 390 x 285 x 40mm



White Melamine Wavy Platter

T 905 420 x 295mm

T 9053 300 x 210mm

★ T 90500 420 x 240mm

★ T 90525 250 x 250mm



Eggshell Melamine Wavy Platter

TES 905 420 x 295mm

TES 9053 300 x 210mm



Black Granite Melamine Wavy Platter

TBGR 905 420 x 295mm

TBGR 9053 300 x 210mm



Green Marble Melamine Wavy Platter

TGMA 905 420 x 295mm

TGMA 9053 300 x 210mm



Pink Marble Melamine Wavy Platter

TPMA 905 420 x 295mm

TPMA 9053 300 x 210mm